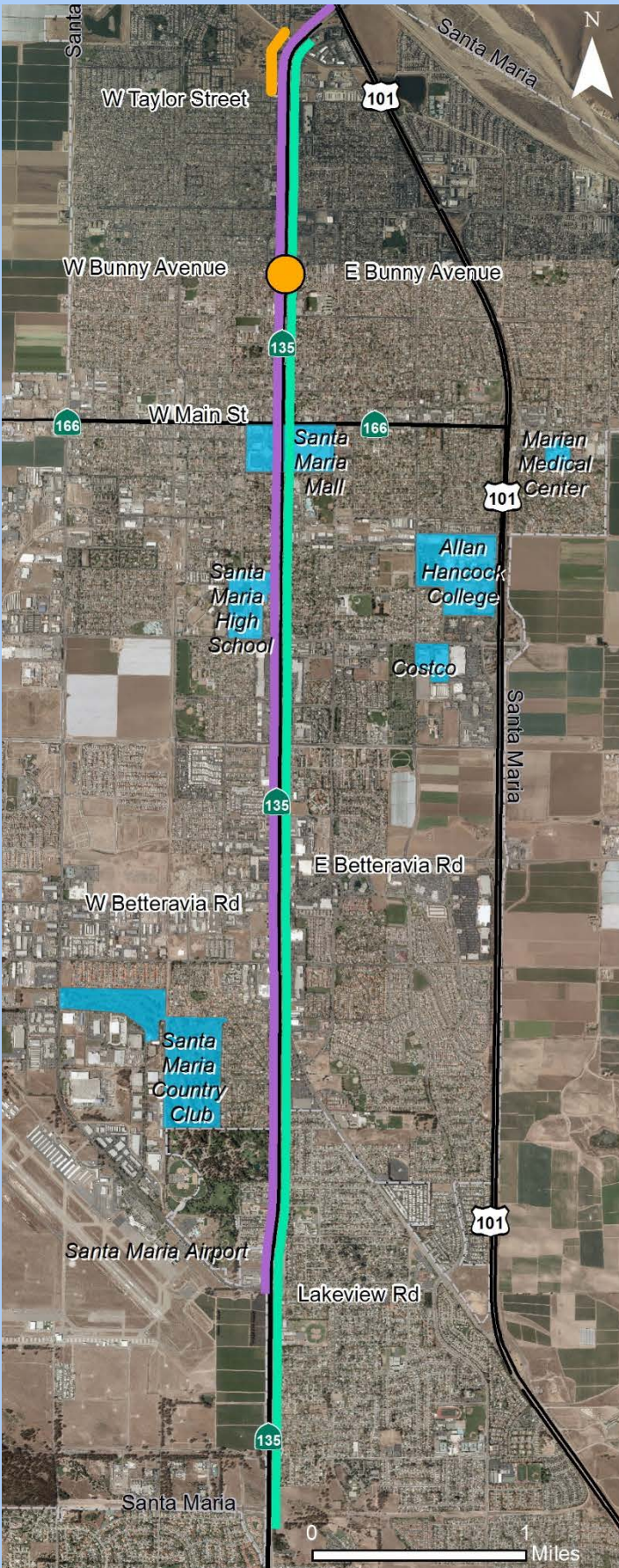


SANTA MARIA HIGHWAY 135 IMPROVEMENTS

Caltrans is enhancing Highway 135 to provide a safe, well-maintained, high-performing transportation system to support the efficient movement of people, goods, and services in Santa Maria.



Santa Maria Pavement Preservation

-Project ID: 05-1G970

-Description: Street overlay to repair pavement to quality standards, and ensure Americans with Disabilities Act compliance on curb ramps.

-Cost: \$10,000,000

-Location: From Lakeview Road to US 101

-Current Phase: Planning

-Construction Phase: Spring 2022

Highway 135 Signal Modifications

-Project ID: 05-1H960

-Description: The modification of signals to achieve higher quality traffic signal indication visibility, install pedestrian countdown signals, and reconstruct curb ramps.

-Cost: \$8,600,000

-Location: From Union Parkway to Prieskar Lane (various locations)

-Current Phase: Planning

-Construction Phase: Late 2020/Early 2021

North Broadway Pedestrian Improvements

-Project ID: 05-1J470

-Description: Install signals, lighting, sidewalks, and curb ramps.

-Cost: \$1,600,000

-Location: At Bunny Avenue (street lighting). From Roemer Way to Prieskar Lane (sidewalk and street lighting on the southbound side)

-Current Phase: Planning

-Construction Phase: TBD

Contact Information:

Joe Erwin, PE

Project Manager

Caltrans - District 5

Joe.Erwin@dot.ca.gov

805.549.3792

<http://www.dot.ca.gov/d5/>



7/14/17